

**Parking Areas**  
**Roadway Lighting**  
**Driveways**  
**Cutoff Wall Lighting**  
**Walkways**



## Specifications

---



- HOUSING** One piece highly-tooled formed aluminum with integral reinforcements and concealed fasteners. The fixtures are UL-listed "suitable for wet locations."
- LENS AND LENS DOOR** SL-21 features a drop acrylic lens (for vertically lamped) or optional (CL) convex glass lens, secured in a clear anodized extruded aluminum door frame with internal corner keys. Horizontally lamped SL-21 fixtures and all SL-16 fixtures are supplied with flat impact-resistant tempered glass.
- OPTICAL SYSTEM** The luminaire is equipped with a multi-faceted segmented reflector, electro-chemically brightened, anodized and sealed. The reflector system is assembled to the housing with concealed stainless steel latches and hinge pins, permitting easy tool-less entry into the ballast chamber. Reflector system is easily rotated in 90° increments. All photometric data is certified by an independent testing laboratory (IES disk available).
- DUAL GASKETING** The lens is fully gasketed to the lens frame with closed cell neoprene. The door frame is gasketed to the housing with a dense silicone extruded gasket featuring twin flexible extensions to provide a double seal.
- BALLAST** All ballasts are CWA or HX-HPF type, with power factor of 90%. Ballast and components are mounted on a removable tray featuring quick disconnects.
- FINISH** Architectural powder coat finishes are applied over aluminum surfaces. These finishes meet or exceed all AAMA requirements for 1,000 hour salt spray exposure.

<b>PROJECT</b>
<b>FIXTURE TYPE</b>
<b>CATALOG#</b>

Metrolux  
 2930 South Fairview Street  
 Santa Ana, CA 92704  
 Phone (714) 371-2394 • FAX (714) 668-1107  
 Toll Free Phone (800) 545-1326  
 e-mail: sales@metrolux.com • www.metrolux.com



## Ordering Example:

SL-21 - VS - MH400 - 277 - SL - FDFD - LX - LA

1 2 3 4 5 6 7 8

### 1. Luminaire

SL-16  SL-21

### 2. Distribution

VS  VS2  S  I  III  F

### 3. Lamp Type & Wattage

#### SL-16

HPS 70  HPS 100  HPS 150\*  MH 70  MH 100  MH 150  MH 175  MH 200\*\*

#### SL-21

HPS 250  HPS 250  HPS 400  MH 250W  MH 400W

\*\* Available only in Pulse Start

#### SL-27

HPS 750  HPS 1000  MH 1000

\* 55 Volt lamp standard on HPS

### 4. Ballast Voltage

120  208  240  277  347  480

### 5. Electrical Options

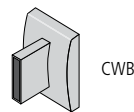
FD Single Fusing - 120V/277V  FDFD Double Fusing - 208V/240V  FDD Double Fusing - 480V  
 FDC Single Fusing - 347V  PCT Photo cell and receptacle

### 6. Optical Options

LX Vandal-resistant shield  CL-60 x 135 - 60 deg vert. x 135 deg Horizontal internal light shield  
 HSS House side shield  CL-80 x 360 - 80 deg vert. x 360 deg Horizontal internal light shield

### 7. Mounting Options

LA Long arm for 2 @ 90°, 3 or 4 fixtures  
 CWB Cast wall bracket  ESF 2" External Slip Fitter



### COLOR CHOICES

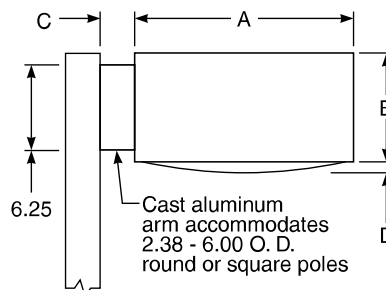
FINISH



### DIMENSIONS

SIZE	16"		21"		27"	
A Square	16.0	406.4 mm	21.0	533.4 mm	27.0	685.8 mm
B	9.5	241.3 mm	11.0	279.4 mm	15.0	381.0 mm
C	2.5	63.5 mm	2.5	63.5 mm		
D	—		2.2	55.8 mm		

Standard 2.5" long arm for use with 1 or 2 fixtures mounted at 180°. Mounting 2 fixtures at 90°, 3 or 4 fixtures requires 12.5" long extruded aluminum arm - specify LA



	PROJECTED AREA (EPA):	
	SL-16	SL-21
1 Fixture	1.36 .12M2	2.08 .19M2
2 Fixture	2.72 .25M2	4.16 .38M2
3 @ 90°	4.0 .37M2	6.24 .57M2
3 @ 120°	4.5 .41M2	6.75 .62M2
4 @ 90°	4.5 .41M2	6.75 .62M2

WEIGHT: SL-16 45 lbs. 20.41 kgs. SL-21 54 lbs. 24.49 kgs. SL-27 77 lbs. 35 kgs.