

**Parking Areas**  
**Building Entrances**  
**Pedestrian Walkways**  
**Shopping Malls**  
**Large Areas**



## Specifications



HOUSING	One piece highly tooled formed aluminum, with integral reinforcements and concealed fasteners and welds. The fixtures are C-UL & UL listed "suitable for wet locations."
LENS AND LENS FRAME	Clear, heat and impact resistant tempered glass lens, secured in an extruded aluminum door frame. 21" & 27" fixtures with VS, V and VR distribution use square convex lens (unless noted otherwise), all others use square flat lens. Note: Drop acrylic lens (DA) is standard on 21" vertically lamped units.
GASKETING	The lens is fully gasketed to the lens frame with closed cell neoprene. The lens door frame is gasketed to the housing with a dense silicone extruded gasket featuring twin flexible extensions to provide a double seal.
INSTALLATION	Design SLY is provided with 1/2" aluminum 6061 T6 Schedule 40 pipe yoke, cast aluminum side caps and pole-top fitter, and matching pole-top plate. Plates are welded to pole top in place of tenon (See detail below). Tenon adapter brackets (TPH) are available for mounting to poles with existing tenons.
REFLECTOR	Reflector systems can be easily rotated in 90° increments or interchanged without the use of tools. Design SLY is available with the following reflector systems: 1) Type S (16" & 21" ) — square distribution; 2) Type VS — square distribution; 3) Type VR (27") — rectangular distribution; 4) Type I (16" & 21" ) — asymmetrical distribution; 5) Type III — asymmetrical distribution; 6) Type F — forward throw distribution; 7) Type 2 — asymmetrical distribution; 8) Type V — symmetrical distribution.
BALLAST	All CWA ballasts (+10% to -10% lamp power regulation) shall be tray mounted and supplied with quick-disconnects. Ballasts are rated for -20° F operation. All non CWA ballast shall be HPF.
FINISH	Polyester powder coat, electrostatically applied, which is preceded by a five step pre-treatment process including an iron phosphate priming stage for superior coating adhesion. This process meets or exceeds all ASTM testing requirements, including those for 1,000 - hour salt spray endurance testing.

<b>PROJECT</b>
<b>FIXTURE TYPE</b>
<b>CATALOG#</b>

Metrolux  
 2930 South Fairview Street  
 Santa Ana, CA 92704  
 Phone (714) 371-2394 • FAX (714) 668-1107 • Toll Free Phone (800) 545-1326  
 e-mail: sales@metrolux.com • www.metrolux.com

# SLY

**DISTRIBUTIONS**

- |                                   |                                      |
|-----------------------------------|--------------------------------------|
| TYPE S Square (Horiz. Lamp)       | TYPE 3 Asymmetrical (Horiz. Lamp)    |
| TYPE VS Square (Vertical Lamp)    | TYPE F Forward Throw (Horiz. Lamp)   |
| TYPE VR Rectangular (Vert. Lamp)  | TYPE V2 Asymmetrical (Vertical Lamp) |
| TYPE 1 Asymmetrical (Horiz. Lamp) | TYPE V Symmetrical (Vert. Lamp)      |

**ORDERING EXAMPLE** SLY-21-VS-HPS-400-CL-DB-120-MP-FD-HSS

MH = Std. Metal Halide  
 MHP = Pulse Start  
 CL = Convex glass lens  
 FL = Flat glass lens

DESIGN	DISTRIBUTION	HPS	MH/MHP	LAMP	LENS
SLY-16	S	70/100/150	70/100/150/175	ED-17	FL
	1	70/100/150	70/100/150/175	ED-17	FL
	3	70/100/150	70/100/150/175	ED-17	FL
	F	70/100/150	70/100/150/175	ED-17	FL
	VS	70/100/150	70/100/150/175	ED-17	FL
SLY-21	VS	250/400		ED-18	CL or FL
	VS		250/400	BT-28/BT-37	CL
	VS		400 Flat Lens	BT-28	FL
	V2	250/400		ED-18	CL or FL
	V2		250/400/450*	BT-28/BT-37	CL
	S	250/400		ED-18	FL
	S		250/400	BT-28/BT-37	FL
	1	250/400		ED-18	FL
	1		250/400	BT-28/BT-37	FL
	3	250/400		ED-18	FL
	3		250/400	BT-28/BT-37	FL
	F	250/400		ED-18	FL
	F		250/400	BT-28/BT-37	FL
SLY-27	V or VS	750		BT-37	CL or FL
	V or VS		1000	BT-56	CL
	V or VS		1000 Flat Lens	BT-37	FL
	V or VS	1000 Flat Lens		BT-37	FL
	V or VS	1000		E-25	CL
	VR		1000	BT-56	CL
	VR		1000 Flat Lens	BT-37	FL
	VR	1000		E-25	CL
	F	1000		E-25	FL
	F		1000	BT-56	FL

\* Available only in Pulse Start 70,100,150,200,450 MHP = Pulse Start

**REQUIRED CHOICES**

**FINISH**

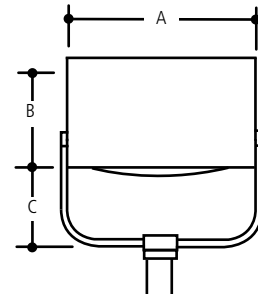


**VOLTAGES MOUNTINGS**

120	TPH	Tenon Adapter
208		(Slipfits 2-3/8" to 2-7/8" Pipe Tenon)
240	MP	Mounting Plate (Weld to pole) See detail
277		
347		
480		

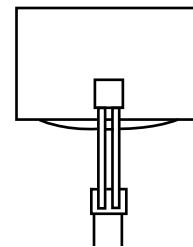
**OPTIONAL CHOICES**

ELECTRICAL OPTIONS	OPTICAL OPTIONS	LIGHT TRESPASS OPTIONS
FD Single Fusing 120V/277V	LX Vandal Resistant Lens (SLY-21 & SLY-16 only)	CL80x360 Internal 80° Vert. x 360° Horiz. Lens Shielding
FDD Double Fusing 480V	CL Convex glass for SLY-21 only (standard - acrylic)	CL60x135 Internal 60° Vert. x 135° Horiz. Lens Shielding
FDFD Double Fusing 208V/240V		HSS House Side Shield (75° standard) (external)
FDC Single Fusing 347V		FL Flat clear glass lens (see ordering information for availability)
PCT Photo Cell and Receptacle		
EQMZ Emergency Quartz Restrike		



**DIMENSIONS**

	16"	21"	27"
A	16.00" sq. (406.4 mm)	21.00" sq. (533.4 mm)	27.00" sq. (685.8 mm)
B	9.50" (241.3 mm)	11.00" (279.4 mm)	15.00" (381.0 mm)
C	7.00" (177.8 mm)	11.00" (279.4 mm)	13.00" (330.2 mm)

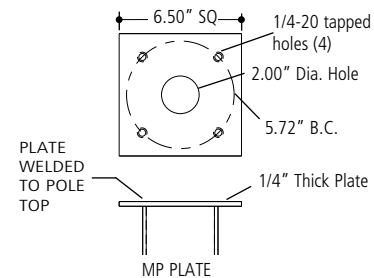


**EFFECTIVE PROJECTED AREA (EPA)**

16"	21"	27"
1.40 sq. ft. (.13M2)	2.00 sq. ft. (.19M2)	3.00 sq. ft. (.28M2)

**WEIGHT**

16"	21"	27"
45 lbs. (20.45 kgs)	54 lbs. (24.54 kgs)	77 lbs. (35 kgs)



**MP PLATE NOTES**  
 Provide plate as shown above or purchase plate from QL.  
 On existing poles with 2" tenon - use TPH adapter.



TPH  
Tenon Adapter



CL80 Shielding Internal  
80° Vert. x 360° Horiz.  
Lens Shielding



CL60x135 Internal  
60° Vert. x 135° Horiz.  
Lens Shielding